



PROGRESS INDUSTRIES



HOUSE & OFFICE FURNITURE

ABOUT US



ANAND SINGH

FOUNDER DIRECTOR - **PROGRESS** INDUSTRIES

Progress industries is a leading manufacturer and supplier of office furniture, home furniture, hotels furniture, and the interiors of everything....

Since 2000, progress industries has designed and manufactured quality furniture that finds its usage in all the type of interiors in all the field .progress industries uses high quality metal and wood materials to build esthetically appealing and durable furniture. Each setup has different needs to be catered terms of size , components and fixtures.

Progress industries provides the widest furniture to suit every size.it enables every small to big manufacturer to customize its setup for maximum optimization and efficiency.



QUALITY POLICY STATEMENT

The company maintains high standards of quality for its products while meeting all quality parameters through well-defined quality assurance and validation systems. The company complies with the current national and international regulations as stipulated by its customers and continuously strives for achieving global quality standards.



ORGANISATION

Our quality policy covers the entire organization including Managing Director and all Heads of respective discipline. Head of Quality Assurance has the authority to implement and validate compliance for product, process and quality systems.



PERSONNEL

The company employees personnel having adequate competency and experience. The employees are regularly trained to provide services of high quality adherence.

MATERIALS

The company uses high quality standards for selecting materials and procures it from approved suppliers only. Materials go through stringent tests as per approved specifications.

PRODUCT QUALITY

Products are manufactured with systematic approach with emphasis on standard quality adherence. The products pass through adequate quality assurance tests at every stage of manufacturing.

STANDARD TEST PROCEDURES

All manufactured products are tested according well defined and documented test plans throughout every stage of production. All changes to product specifications are applied to test procedures through a change control process as defined by quality assurance department.

VALIDATIONS

Facilities, processes and equipment that have been identified as having an impact on the product quality are validated prior to use. The validations are used across the entire life cycle of product manufacturing.

INTERNAL AUDITS

Company adheres to standard auditing procedures to detect any shortcomings in quality assurance and suggest corrective action. The audits are carried out regularly.

CUSTOMER COMPLAINTS

Quality Assurance department takes care of customer complaints as per well established procedures. All customer complaints are documented along with their resolutions and made available to the QA staff as a knowledge bank

HANDLING OF NON-CONFORMANCE

Company adheres to standard process to handle products failing to maintain quality. Investigations are carried out to identify the root cause and suggest ways for amicable resolution.

HOME FURNITURE

Progress Industries Specializes In Furniture In Full Wood And Stainless Steel Material

The Product Range Consists Of Floor Mounted Structures Built In Full Wood, Inset Steel Cabinets, Pullout Cabinets And Fume Hoods.



LIVING ROOM



LIVING ROOM



MASTER BEDROOM



PROGRESS
INDUSTRIES

MASTER BEDROOM INCLUDES
Beds
Wardrobes
Dressers
Curtains
Vanities , Trunks & Mirrors

MASTER BEDROOM



MASTER BEDROOM



MASTER BEDROOM



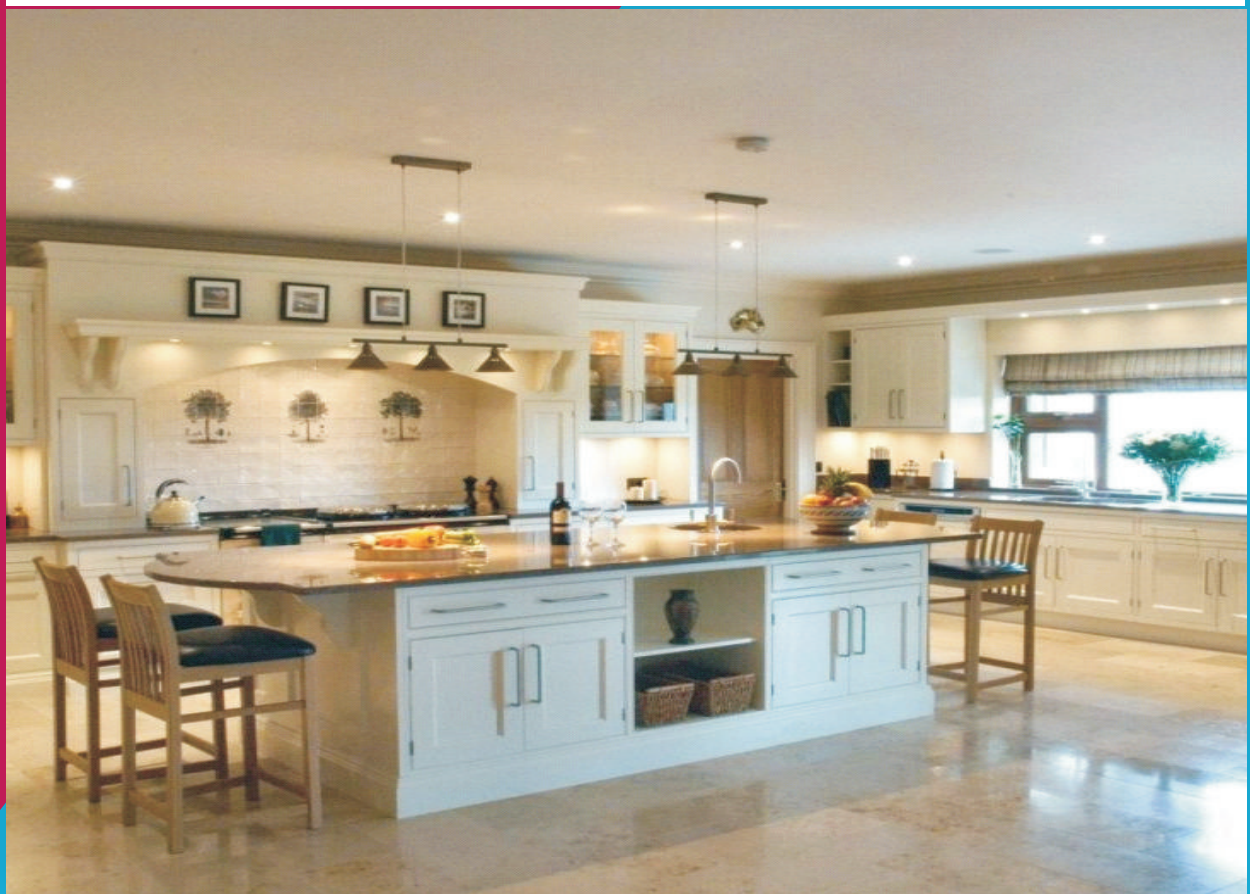
MODULAR KITCHEN



MODULAR KITCHEN normally constitutes wooden cabinets, counter tops, internal accessories, electro eomestic gadgets like chimney, hob, built-in-oven, sink with or without drain board and in some cases a refrigerator, dishwasher or other gadgets.

MODULAR KITCHEN INCLUDES
Floor Units
Wall Cabinets
Tall Storage Unit

MODULAR KITCHEN



MODULAR KITCHEN



MODULAR KITCHEN



CHILDRENS ROOM



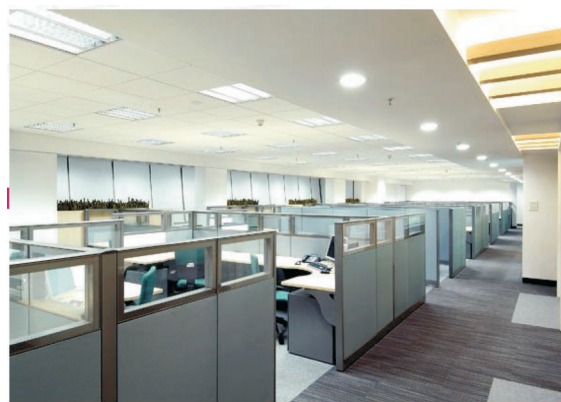
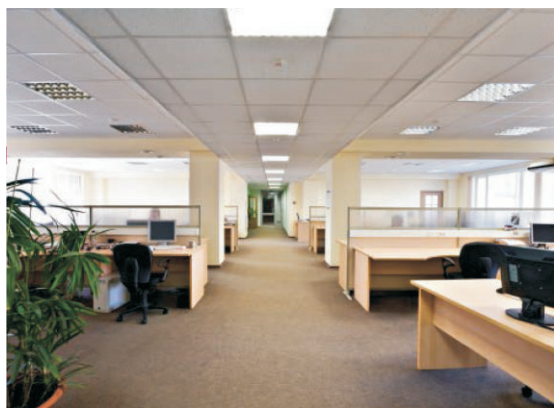
CHILDREN ROOMS INCLUDES

It consists basically
bedroom
Study table
Wardrobe

CHILDRENS ROOM



OFFICE FURNITURE



OFFICE FURNITURE INCLUDES
Conference Table
Reception Table
Office Cabin Table
Clean Room Partition and Doors
Can Copy & Structural Glazing

OFFICE FURNITURE



OFFICE FURNITURE



CLIENTELE





PROGRESS INDUSTRIES

**WE STRONGLY BELIEVE
PERFORMANCE
IS OUR BUSINESS**

Quality is our Foundation

We assure the best quality and
we promise we will not let our clients down

ADDRESS

GIDC Plot No. 121, Phase III-B, Verna Industrial Estate, Verna, Goa - 403722. INDIA

Phone : 0832 6627601/3

Mobile : 7720073566

www.progressindustries.in

progressindustries2@gmail.com